

*ISPE Boston Area Chapter, Women in Pharma® Committee Presents:*

# The Power of LinkedIn

**Thursday, November 17, 2022**

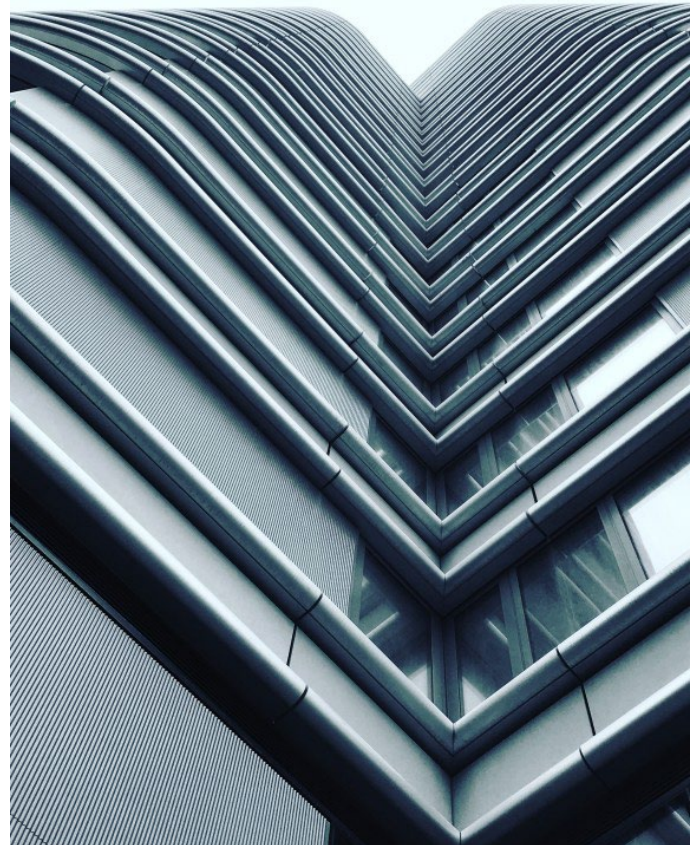
12:00 pm to 1:00 pm

*Via Zoom*



## **PROGRAM SUMMARY:**

Join us as we hear from Steve Flanagan about the power of LinkedIn and leveraging it to build your personal brand. Steve has helped many people in this area and continues to do so daily. He has over 18 years of experience in personal branding, and over 20 years of experience in business development. Prior to that, he worked as a licensed architect and a construction manager. He has recently joined Consigli Construction in a Business Development role.



People perceive who you are based on how you present yourself. Steve will share how to show your passion, energy, and love to build an audience and create visibility on LinkedIn. Visibility creates new opportunities. This approach is covid, job loss, and health issues proof as well as many other things.

Everything happens in parallel. You don't need to wait years to see results. The progress builds on itself. Daria Bukesova from Ci Design will share LinkedIn's impact on her career in just under a year.

## **MEETING MANAGER:**

**Daria Bukesova, ci-design**

**Location:**

via Zoom (A personalized Zoom link will be sent to you closer to the program).

**Registration Fees:**

Members: FREE, Non-Members: \$15

**REGISTRATION IS NOW OPEN ONLINE AT:**

[www.ISPEBoston.org/Events](http://www.ISPEBoston.org/Events).

ISPE, Boston Area Chapter, 465 Waverley Oaks Road, Suite 421, Waltham, MA 02452  
Telephone: 781-647-ISPE (4773) ☒ Fax: 781-647-7222 ☒ Email: [office@ispeboston.org](mailto:office@ispeboston.org)

**\*\*PLEASE NOTE: CANCELLATIONS RECEIVED AFTER November 10 ARE SUBJECT TO BILLING\***